

EDGEFIELD

SOUTH CAROLINA

the Gateway to Southern History



Town of Edgefield
(803) 637-4014
townofedgefield@edgefieldsc.net
www.ExploreEdgefield.com

Arts
&
ANTIQUES

Locally
OWNED RESTAURANTS

Wildlife
CONSERVATION

Living
HISTORY

Live
THEATER

Heritage
ATTRACTIONS



Welcome

Travel to Edgefield! Our town is the definition of Southern charm. We are rich with history, pottery, museums, and more. See the history of Edgefield through our numerous historical sites in town.

Experience the artisans at work. Visit Old Edgefield Pottery and learn about Dave Drake, the enslaved potter who has placed Edgefield on the map. Observe our blacksmith and award winning woodcarver. Tour our museums: The National Wild Turkey Federation, the Discovery Center and Oakley Park (Red Shirt Shrine) Museum. Finally, stop in our locally owned shops and restaurants. The shops have unique souvenirs and the food is always delicious.

I invite you to explore Edgefield, the true “Gateway to Southern History.” If you cannot come in person, visit us on Facebook, Edgefield, South Carolina or our website, www.exploreeedgefield.com. We look forward to seeing you soon!

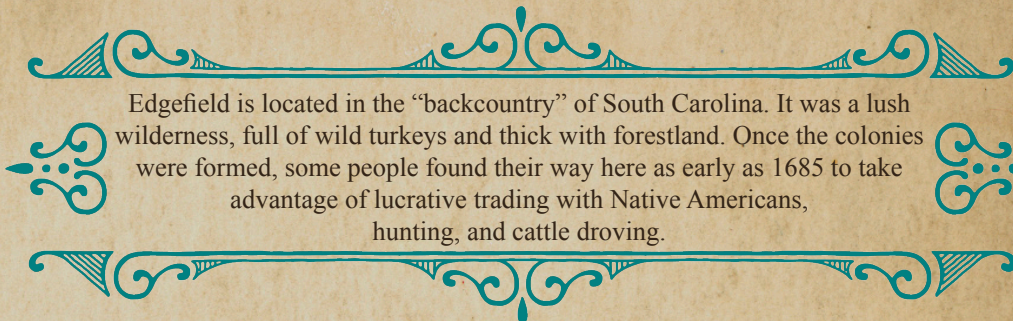
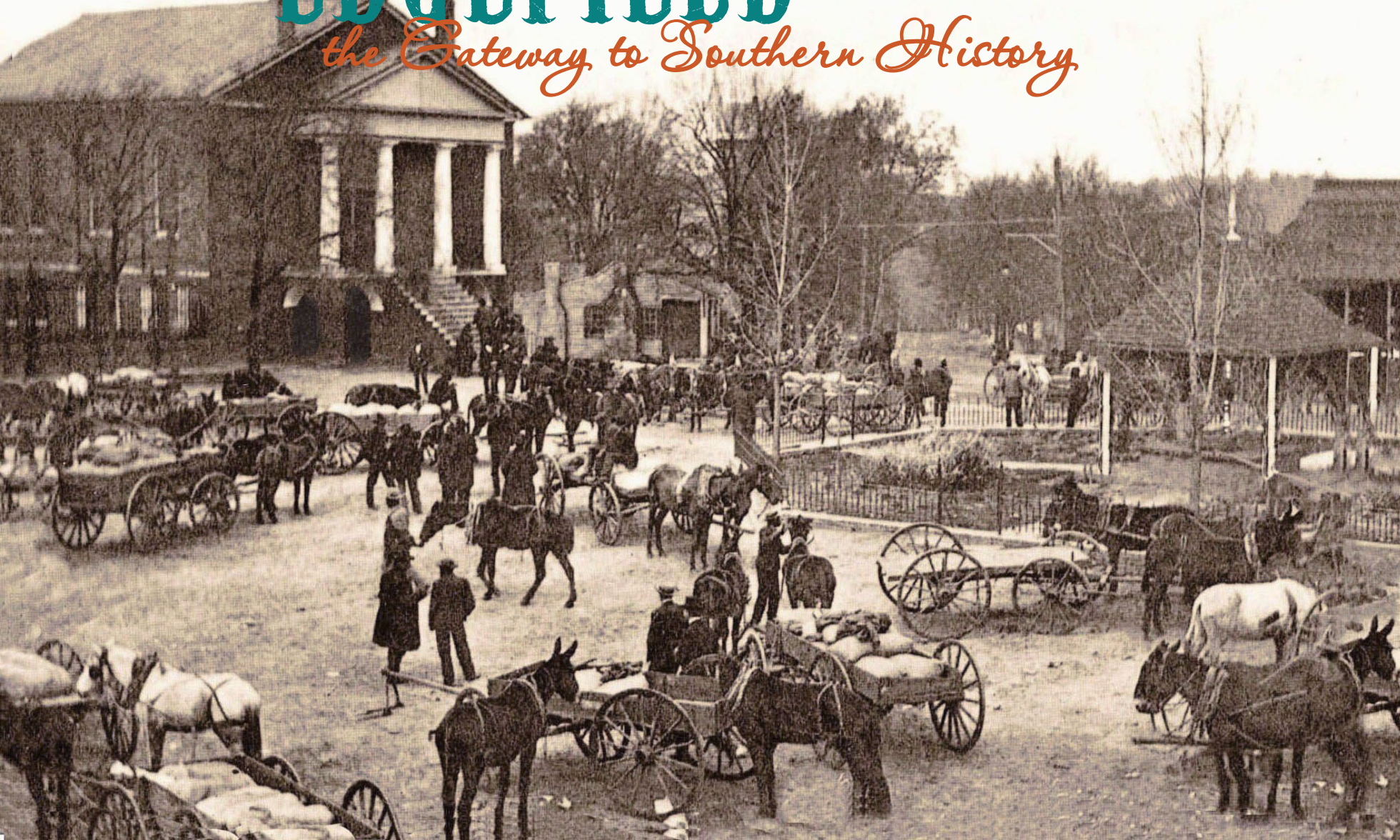
Sincerely,

W. Ken Durham
Mayor of Edgefield



EDGEFIELD

the Gateway to Southern History



Edgefield is located in the “backcountry” of South Carolina. It was a lush wilderness, full of wild turkeys and thick with forestland. Once the colonies were formed, some people found their way here as early as 1685 to take advantage of lucrative trading with Native Americans, hunting, and cattle droving.

MURDERS & MAYHEM

Settlers quickly surged into Edgefield, some hearing about the ideal landscape and others traveling down the Great Wagon Road to escape the French & Indian War in the north. But as colonists and pioneers moved in, so did the outlaws.

It was an uncertain and unruly time, with little to no governance and regulation. Edgefield was the backdrop for both the Cherokee War and the American Revolution, which only added to the chaos and pitted neighbor against neighbor.

Though many Southern towns were established with this unstable foundation, Edgefield continued to garner a reputation for violence until well after the Civil War. Duels and family feuds played out on the streets to the point where it has been said that blood covered every inch of Courthouse square.



“It always paid to recollect that you were in Edgefield. But so careful were they that in a gunfight no peddler had ever been killed in an Edgefield fight. They shoot straight and hit the man they shoot at. These fights were purely personal affairs and outsiders were generally safe.”

Paladian of South Carolina by James Henry Rice, reprinted from the Edgefield Advertiser, date unknown

POTTERY. PEACHES & POLITICS

Edgefield is perhaps most famous for politics, pottery and peaches. Edgefield was a political hotspot, and the home of ten South Carolina Governors who served in between 1816 and 1951. Today, Edgefield's favorite sons and their contributions to South Carolina are commemorated with statuary on the town square and several of their former homes are available for tour.

Pottery has been a staple in this area since 1810, when Abner Landrum developed the Pottersville area of Edgefield. Pottersville grew into a successful commercial stoneware business, and the Edgefield style of pottery became known for its safe and waterproof alkaline glaze. Edgefield pottery is now world famous and much sought after for collectors, particularly work done by "Dave the Slave Potter," who was enslaved by Abner Landrum and inscribed dates and poetry to his (usually very large) pottery.

No matter which way you drive to get to Edgefield, you will soon know why Edgefield is famous for its peaches. Peach trees line almost every highway and rural road, and they make for an especially scenic drive when they bloom each spring.

This brief history is only a small taste of Edgefield's colorful, intriguing, and sometimes scandalous past. Come see for yourself and we guarantee you'll find out that Edgefield truly is the Gateway to Southern History!



HOME OF TEN GOVERNORS



Pitchfork Benjamin Ryan Tillman, Governor of SC (back seat) visiting his old plantation home in Edgefield County, SC 1919



Andrew Pickens, Jr.
(1816-18)



George McDuffie
(1834-36)



Pierce Mason Butler
(1836-38)



James H. Hammond
(1842-44)



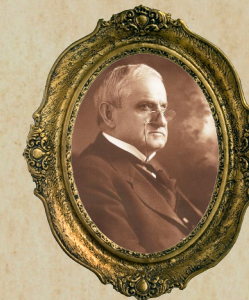
Francis W. Pickens
(1860-62)



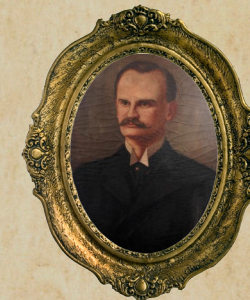
Milledge Luke Bonham
(1862-64)



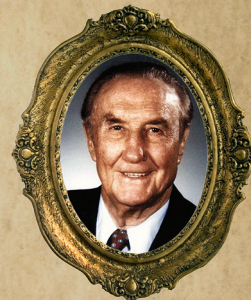
John C. Sheppard
(1886)



Benjamin R. Tillman
(1890-94)



John Gary Evans
(1894-97)



J. Strom Thurmond
(1847-51)

HISTORY TIMELINE of EDGEFIELD

1540




Spanish explorer Hernando de Soto passed through the South Carolina backcountry

1670



The English colony of Charles Towne was established

1700



The population of South Carolina was 5,000 with most living within a few miles of Charles Towne

1715

Stevens Creek Area is named after a cow drover by the name of John Stevens

LATE 1730s

Settlers first trickled into the area of what was to become the Old Ninety Six District

1754



French and Indian War: A large migration begins from northern colonies down the Great Wagon Road into South Carolina

1755



The Cherokees ceded an estimated forty thousand acres to South Carolina

1760s

The Cherokee War terrorized the sparsely settled backcountry

1767-69

The Regulator Movement began in order to suppress lawlessness in the backcountry

1769

The District of Ninety Six is created and a Circuit Court System is established

1776-83

American Revolution. Royal grants ceased

1785



Counties of Edgefield, Abbeville, Newberry, Laurens, Union and Spartanburg were carved out of the Old Ninety Six District and a "public lot" of Edgefield was identified



GROUP TOURS



Whether you are here for the day or a week, Edgefield is full of fun travel ideas no matter how big your group or diverse your interests. Almost all of our attractions are within walking distance of each other, and many restaurants have special group rates. Make sure to check out our listings for all the choices of where to go, but we've also included a tour itinerary as a great example of a day trip for a large group!



GROUP TOUR CONTACT: TOMPKINS LIBRARY
803.637.4010 / Oedgs85@gmail.com

A DAY IN EDGEFIELD

Group tours come from far and wide to experience Edgefield at its finest. Here is one small example of what you could experience in just one day!



EDGEFIELD COUNTY THEATRE COMPANY & DISCOVERY CENTER

Park here for the day and browse the exhibits to get a quick introduction to the history of Edgefield County. Make sure to check out Strom Thurmond's relics, pottery made by Dave the Slave Pottery and ask for an events schedule... the building is also the local theatre by night!



OLD EDGEFIELD POTTERY

Take a short walk to Old Edgefield Pottery to watch a demonstration of clay being formed into Edgefield pottery just like they did centuries ago. The master potter will also tell you all about Edgefield's deep roots in pottery and show you his impressive collection of antique pottery.



LUNCH

It's another short walk to the restaurant of your choice. There's a full bar and menu at the Old Edgefield Grill (you can even sit in the Strom Thurmond room), sandwiches, soups & specials at Park Row and Delectable Delight, southern buffet at Bob's Cafe, and hotdogs and burgers at the Billard Parlor. There's also Pleasant Acres, a historic B&B that will also cater for groups under 20 people. Make sure to call ahead if you want a set menu for your group!



COURTHOUSE SQUARE

Walk off lunch and browse the locally-owned shops and boutiques on Courthouse Square. From antiques at The House Next Door to historical research at Tompkins Library and moonshine at Carolina Moon Distillery, there's something for everyone!



OAKLEY PARK

Tour Oakley Park, which was built in 1835 and is one of the oldest existing homes in Edgefield. It was the home of Martin Witherspoon Gary, a former Confederate Major-General who made Oakley Park his headquarters for the Red Shirt movement. The home is fully furnished with family heirlooms and antiques.



A FRESH FAREWELL

Stop by one of our roadside stands for the freshest produce around. Try Sara's for peach ice cream and Cook's for their boiled peanuts!



HISTORIC SITES

- 1 Oakley Park
- 3 Macedonia Baptist Church
- 5 Edgefield Theatre Company & Discovery Center
- 6 Trinity Episcopal Church
- 7 Edgefield Baptist Church
- 8 Willowbrook Cemetery
- 11 Edgefield United Methodist Church
- 12 Magnolia Dale
- 17 Edgefield Advertiser
- 19 Courthouse Square
- 28 Edgefield County Courthouse
- 29 History Wall
- 30 St. Mary of the Immaculate Conception

FOOD & SPIRITS

- 9 Chef Bob's Cafe
- 16 Park Row Market No. 1
- 18 Carolina Moon Distillery
- 22 Delectable Delights
- 24 Old Edgefield Grill
- 27 Edgefield Billard Parlor

SHOPPING

- 2 Carnoosie Antiques
- 10 Escape Day Spa & Salon
- 13 Still Magnolia's
- 15 The Turkey Shoppe
- 23 The Edgefield General Store
- 25 Edgefield Trading Company
- 31 House Next Door
- 32 Frugal Finds Thrift Shop
- 34 John Kemp Antiques

HISTORY RESEARCH & TOURIST INFO

- 20 D.A. Tompkins Library
- 26 Edgefield County Archives

ARTISAN COMMUNITY

- 4 Carpenter's Stand (Call Ahead)
- 14 Jane Bess Pottery
- 21 Old Edgefield Pottery
- 30 Village Blacksmith (By Appointment)
- 39 Clay Works
- 40 Pottery Center at Piedmont Tech

HISTORIC SITES

1 OAKLEY PARK 300 Columbia Road / 803.637.4027

Built in 1835, Oakley Park was first the home of Daniel Byrd, a successful cotton planter. It later was the home of General Martin Witherspoon Gary, a fiery Confederate politician and father of the Red Shirt movement. The home is now a public museum and Red Shirt shrine, managed and operated by the Daughters of the Confederacy.



3 MACEDONIA BAPTIST CHURCH 315 Macedonia Street / 803.637.5333

This church was built in 1901, but formed in the years right after the Civil War. There is a cemetery directly behind the building.

5 EDGEFIELD THEATRE COMPANY & DISCOVERY CENTER 405 Main Street / 803.637.3833

This building was originally known as Magnolia Grove and was built in 1840 by Captain James Miller, a wealthy planter and captain of the Edgefield militia. Before it was moved from its original location (about seven miles away) in 1992, it had a 2nd floor ballroom. Today it is a museum by day, showcasing exhibits on Edgefield County History. Admission is free, but donations are appreciated. By night, the building houses popular theatre shows.

6 TRINITY EPISCOPAL CHURCH 313 Simpkins Street / 803.275.3934

This is the oldest church building now standing in Edgefield, completed in 1836. A Victorian church tower was added in 1886, the upper portion of which was replaced by the present steeple in 1951. Significant memorials in the church include the stained glass windows.

7 EDGEFIELD FIRST BAPTIST CHURCH 212 Church Street / 803.637.4027

First known as the Edgefield Village Baptist Church, this congregation has been worshipping at this site since 1823. One church was torn down, and another burned. Construction on the current church building began in 1914. Willowbrook Cemetery adjoins the churchyard.

8 WILLOWBROOK CEMETERY 212 Church Street / For guided tours call 803.637.4010

This is the 2nd most historic cemetery in SC and is overflowing with "residents" who carved their place in local, state and national history. The oldest marked grave here belongs to Pierre LaBorde, who died in 1820. There are also soldiers from every major war fought in the United States and four out of the ten Edgefield Governors (Francis W. Pickens, John Gary Evans, John C. Sheppard and J. Strom Thurmond).

11 EDGEFIELD UNITED METHODIST CHURCH 309 Norris Street / 803.637.6139

The present sanctuary was built in 1891 to replace the former frame structure, though it was restored in 1982 after a fire damaged some of the building. However, Methodism in Edgefield started long before this building, back when services were held in the original Court House in the 1790s (near the current location of the Plantation House Hotel).

12 MAGNOLIA DALE 320 Norris Street / 803.637.2233

This home was built on the site of the very first residence in Edgefield, dating approximately to 1762. The present house was built circa 1843 and eventually became the home of James Hammond Tillman, a Lieutenant Governor of South Carolina. Tillman became notorious for shooting the editor of The State newspaper at point blank range because he printed unflattering things about him, only to be acquitted of the charges. Since 1929 the Edgefield County Historical Society has maintained the building as its headquarters and offers tours of the home and its impressive collection of artifacts and antiques by appointment.

17 EDGEFIELD ADVERTISER 117 Courthouse Square / 803.637.3540

Established in 1836, The Edgefield Advertiser is the longest continuing newspaper in South Carolina. Make sure you drop by to say hello, and you might just find yourself in next week's edition!

19 COURTHOUSE SQUARE

Courthouse Square is the heart of downtown Edgefield and has changed little in function or appearance and charm in over 225 years. Several monuments have been erected, including a statue of Senator J. Strom Thurmond, the longest serving Senator in U.S. history. There is also an obelisk in memory of Confederate soldiers in Edgefield, a memorial erected by the Daughters of the American Revolution, and a stone to the ten Governors and five Lieutenant Governors that were once natives or residents of Edgefield.



28 EDGEFIELD COUNTY COURTHOUSE 124 Courthouse Square / 803.637.4104

The present courthouse was built in 1839. Although it was not designed by Robert Mills, it was certainly inspired by him as it was designed and constructed by his longtime protege, Charles Beck. The courthouse was the site of many conflicts, duels, shootouts and even murders. Notice the chimneys, which once illuminated the courtroom (they are no longer in use). Groups can tour the interior by appointment when court is not in session. Artifacts from the courtroom are also on display at the Tompkins Library.

29 HISTORY WALL

Located on the opposite corner across from the Courthouse, the history wall details Edgefield history from local Native American tribes to the 21st information panels.

33 ST. MARY OF THE IMMACULATE CONCEPTION 302 Jeter Street / 803.637.6248

Construction on this church began in 1858, using granite from a local quarry and Irish stonemasons. It was designed by John Rudolph Niernsie, the architect of the State House in Columbia. Wide hand-planted boards and wooden pegs from the doors with the original lock. The cemetery behind the church holds about 100 graves, including a number of Confederate soldiers.

SHOPPING

2 CARNOOSIE ANTIQUES 407 Columbia Road On the shelves: Antiques

10 ESCAPE DAY SPA & SALON 304 Main Street On the shelves: Beauty products & services

13 STILL MAGNOLIA'S 300 Main Street On the shelves: Gifts, Home Decor, Ornaments, Etc.

15 THE TURKEY SHOPPE 203 Main Street On the shelves: Outdoor gear, framed art, guns, hunting supplies & clothing

23 THE EDGEFIELD GENERAL STORE 102 Courthouse Square / www.edgefieldgeneralstore.com

25 EDGEFIELD TRADING COMPANY 123 Courthouse Square On the shelves: Consignments, antiques & collectibles

- 31 THE HOUSE NEXT DOOR**
311 Jeter Street / 803.637.4600
On the shelves: Antiques & Collectibles

- 32 FRUGAL FINDS THRIFT STORE**
301 Main Street / 803.341.5050
On the shelves: Second hand treasures

- 34 JOHN KEMP ANTIQUES**
306 Buncombe Street / 803.637.3364
On the shelves: Gifts, Home Decor, Ornaments, Etc.



- 18 CAROLINA MOON DISTILLERY**
116 Courthouse Square / 803.480.3379
On the menu: Local moonshine, gift shop & tastings



- 22 DELECTABLE DELIGHTS**
217 Simkins Street / 803.480.5756
On the menu: Southern cuisine, catering, edible fruit arrangements

- 24 OLD EDGEFIELD GRILL**
202 Penn Street / 803.637.3222
On the menu: Southern cuisine, vintage bar



- 27 EDGEFIELD BILLARD PARLOR**
125 Courthouse Square / 803.637.9941
On the menu: Hot dogs, burgers, chicken fingers & fries

HISTORY RESEARCH & TOURIST INFO

- 20 TOMPKINS LIBRARY & EDGEFIELD WELCOME CENTER**
104 Courthouse Square / 803.637.4010

The Tompkins Library is the official visitors center of Edgefield and is operated by the Edgefield Civic League. The center provides maps, books, souvenirs & information about businesses, services and activities in Edgefield. The library is also the headquarters for the Old Edgefield Genealogical Society and the SC Genealogical Society, where visitors can do research on the history of the area.

- 26 EDGEFIELD COUNTY ARCHIVES & HISTORY**
104 Courthouse Square / 803.637.4010

This facility is state-of-the-art and contains some of the oldest and best preserved records in SC, including the most complete collection of county records next to Charleston. A vast range of documents are available for research, dating from when the county was first incorporated.

ARTISAN COMMUNITY

- GROUNDHOG KILN**
54 Crest Road

This traditional wood-burning kiln is similar to those used here over 200 years ago. The Edgefield Pottery tradition continues here today using the same clay that brought potters to this region so long ago. The kiln is an extension of the Old Edgefield Pottery studio, and hosts firings several times a year.

- 4 IKE CARPENTER'S STAND**
500 Main Street

Ike Carpenter is a recipient of the SC Folk Heritage Award. He is a beloved character of Edgefield who whittles his woodwork and tells tales of the history of Edgefield County.

- 14 JANE BESS POTTERY**
206 Lynch Street / 803.637.2434

Jane Bess handcrafts stoneware pottery in her studio and shop, where each piece comes out perfect for celebrating, entertaining, collecting & enjoying. Jane's most famous pieces include ornaments, plates, serving dishes and more. Special orders available.



- 21 OLD EDGEFIELD POTTERY**
230 Simpkins Street

The working studio for Master Potter Justin Guy, Old Edgefield Pottery is a working studio that continues the 200 year old tradition of making Edgefield Pottery. Here you can watch clay turned on the wheel and browse pots fired straight from the local Groundhog Kiln.

- 30 THE VILLAGE BLACKSMITH**
206 Jeter Street / By Appointment 803.637.4010

Firing and molding of local ironwork, right before your eyes!

- 40 THE POTTERY CENTER AT PIEDMONT TECH**
506 Main Street / 803.637.5388

Young potters are still at work here in Edgefield, and here the pottery center offers their locally made items and special programs. The pottery is open to the public Tuesdays-Fridays 9-5 and Saturdays 9-1. Also on campus is the start of the Ten Governor's Rail Trail.

FOOD & SPIRITS

- 9 CHEF BOB'S CAFE**
303 Main Street / 803.637.0008
On the menu: Southern buffet, full menu & catering

- 16 PARK ROW MARKET NO. 1**
108 Courthouse Square / 803.637.0040
On the menu: Sandwiches, soups, salads, weekly specials

FARMS & MARKETS

COOK'S FARM ROADSIDE STAND

1236 Augusta Road / 803.637.2970

On the farm: Fresh produce, meat, plants, open seasonally



EDGEFIELD FARMERS MARKET

Main Street / 803.637.9536

Every Saturday April - November

HICKORY HILL FARM

7 Hickory Hill Lane / 803.637.6141

On the farm: Whole milk and chocolate milk, hormone free & non-homogenized

OLE EDGEFIELD BUTCHER SHOP

715 Augusta Road / 803.336.4665

On the farm: Meat market, fresh produce, specialty items

SARA'S ROADSIDE STAND

5150 Edgefield Road, Trenton

On the farm: Fresh produce, specialty items, and ice cream

ACCOMMODATIONS



PLEASANT LANE ACRES B&B

318 Pleasant Lane Road / 803.637.2001

Amenities: Historic home, countryside, home-cooking, catering



THE EDGEFIELD INN

702 Augusta Road, Edgefield / 803.637.2001

Amenities: Close to historic downtown, exercise room, free wi-fi, continental breakfast

OUTDOOR RECREATION

PINE RIDGE COUNTRY CLUB

425 Pine Ridge Road / 803.637.3570

Amenities: Semi-private, 18-holes, bar & grill, pro shop

SUMTER NATIONAL FOREST HEADQUARTERS

810 Buncombe Street / 803.637.5396

Amenities: 120,000 acres, Sumter National Forest, primitive camping, fishing, hunting, hiking

SLADE LAKE

Waterworks Road

Amenities: Fishing, Ten Governors Rail Trail



TEN GOVERNORS RAIL TRAIL

506 Main Street

Amenities: .9-mile paved trail, history on Edgefield's Governors, fishing dock

NATIONAL WILD TURKEY FEDERATION & WINCHESTER MUSEUM

770 Augusta Road / 803.637.3106

Amenities: Museum, outdoor education center, nature trails, wetland habitat side & pavilion, archery



ADDITIONAL DINING

HUDDLE HOUSE

781 Augusta Road, Edgefield

EL GUERRERO

725 Augusta Road, Edgefield

MCDONALDS

714 Augusta Road, Edgefield

CB'S BBQ

312 Augusta Road, Edgefield

NO. 1 CHINA

785 Augusta Road, Edgefield

PIZZA HUT

733 Augusta Road, Edgefield

SUBWAY

167 S Carolina 23, Edgefield

ADDITIONAL SHOPPING

THE RABBIT PATCH

259 Bauskett Street, Edgefield / 803.637.1223

On the shelves: Gifts

DIANA'S CURIO SHOP

607 Gray Street, Edgefield / 803.637.3005

Unique Collectibles